



# NA/NB MIATA CABIN FILTER INSTALLATION

## Tools Required

- Tool pick or flat head screwdriver
- Long Phillips screwdriver
- Stubby Phillips screwdriver
- 14mm socket with ratchet
- Sheet metal cutters or other form of metal cutting tool (Optional)

1) By the windshield base, remove the plastic caps and 7 cowl screws from the front of the windshield (note screws are easier to access with the hood down).



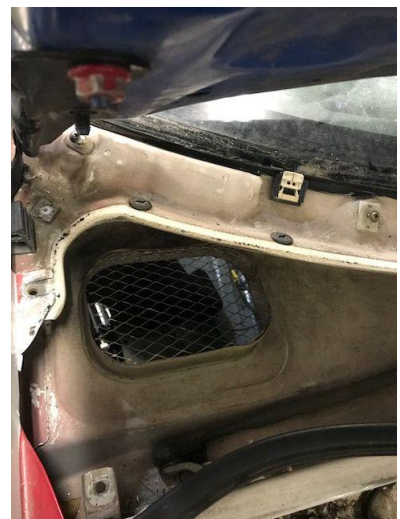
2) Remove wiper blades using the 14mm socket.

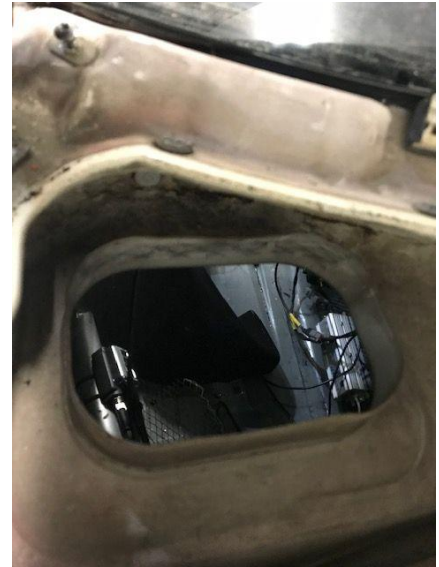
3) Remove wiper cowl cover.

4) Remove HVAC cover, this is held on by a mixture of metal screws on the wiper cowl side, 2 plastic screws holding the cover to the firewall and a plastic tab inside the wiper cowl. (note: The cowl screws can easily be accessed with the hood down.) Once the screws are removed the cover will be a little challenging to remove, there is a seal on the underside of the cover which can sometimes be stuck to the car.



5) Once the cover is removed you will see the hole where the cabin filter goes. It is covered by a metal screen which will either need to be removed (recommended) or pushed down to allow the filter to sit on top. If you decide to remove it you will need to cut out the 4 spots where the mesh is spot welded to the cowl, there will be 2 welds on the front and 2 on the back of the opening.





6) Once the screen is removed or repositioned you will be able to fit the cabin filter in the hole with a snug fit, the metal brim around the hole is very thin and can be massaged to fit the cabin filter securely in the hole.



7) Once the filter is installed, reinstall using the steps above in reverse.

For Questions or concerns feel free to email [support@jemanufacturing.com](mailto:support@jemanufacturing.com)